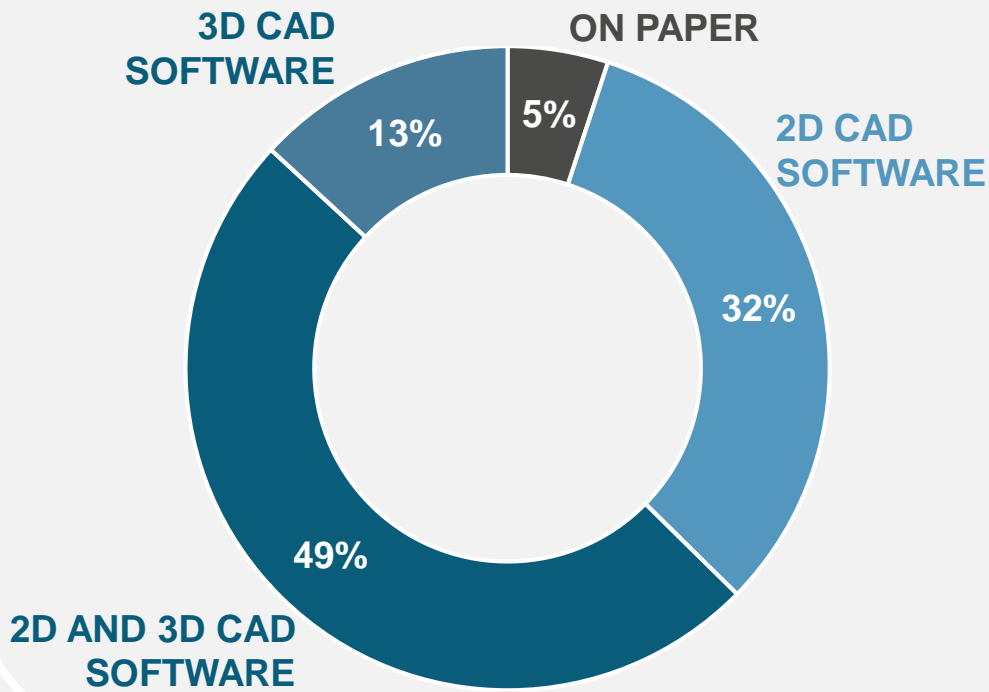


Development of BIM

European Architectural Barometer Q4 2019

Way of designing



46%

works with



20%

works with



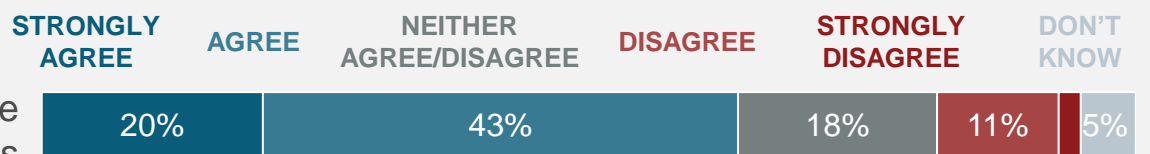
16%

works with



BIM obstacles

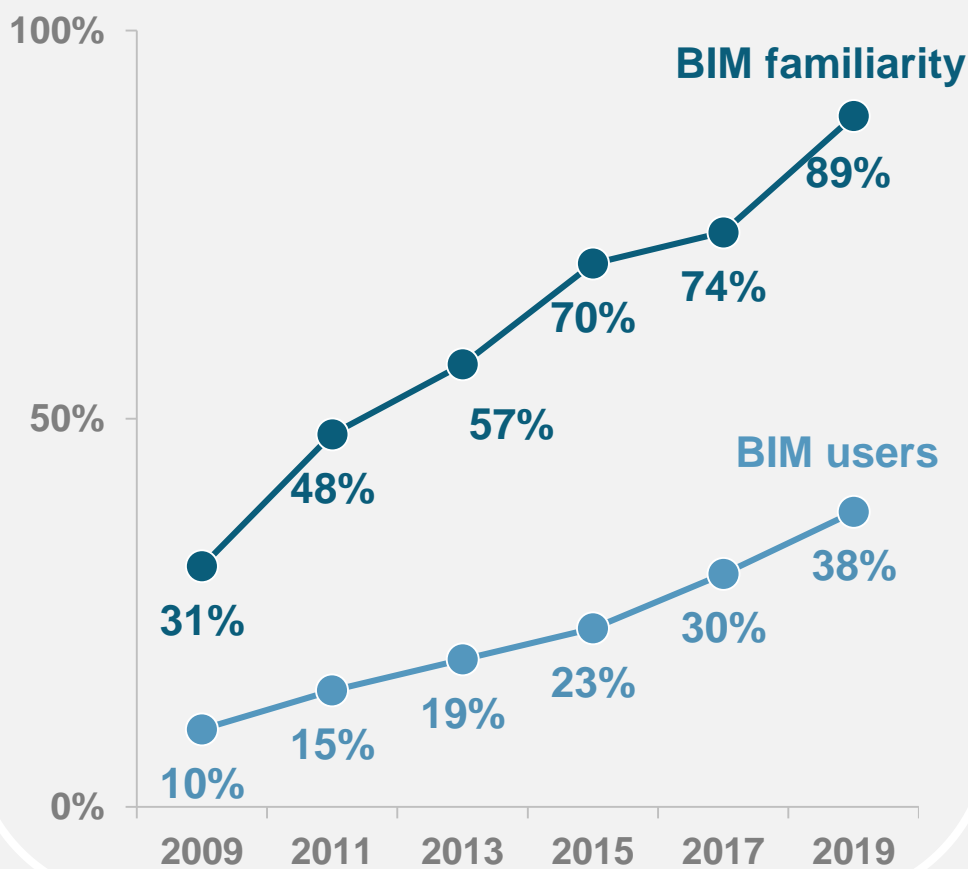
BIM is difficult to implement, because many people want to use/see traditional drawings



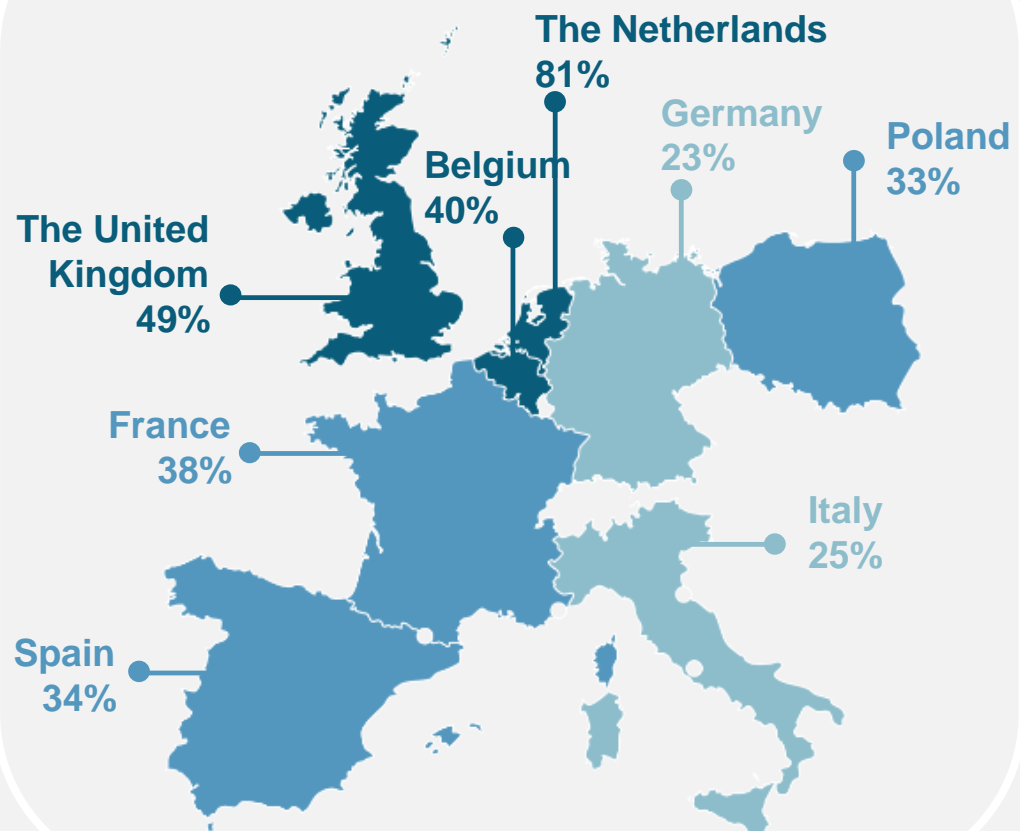
BIM is difficult to implement, because many people are not able to understand/read the information/files



BIM familiarity and usage development



BIM users in Europe



This report provides both **cross country and country specific results** expressing the view of architects on the usage of BIM in projects.

MORE ON BIM

- BIM in projects
 - Way of designing
 - Way of data exchange
 - BIM familiarity and usage development
 - Current and expected percentage of BIM users
 - Reasons for (not yet) using BIM
 - BIM features and related software used
 - Information shared with parties and what
 - Obstacles and opportunities BIM users face

